

# CERTIFICATE OF LOCATION OF GOVERNMENT CORNER

EAST QUARTER Corner of Section 28, Township 107N, Range 39W

5th Principal Meridian, State of Minnesota, County of MURRAY

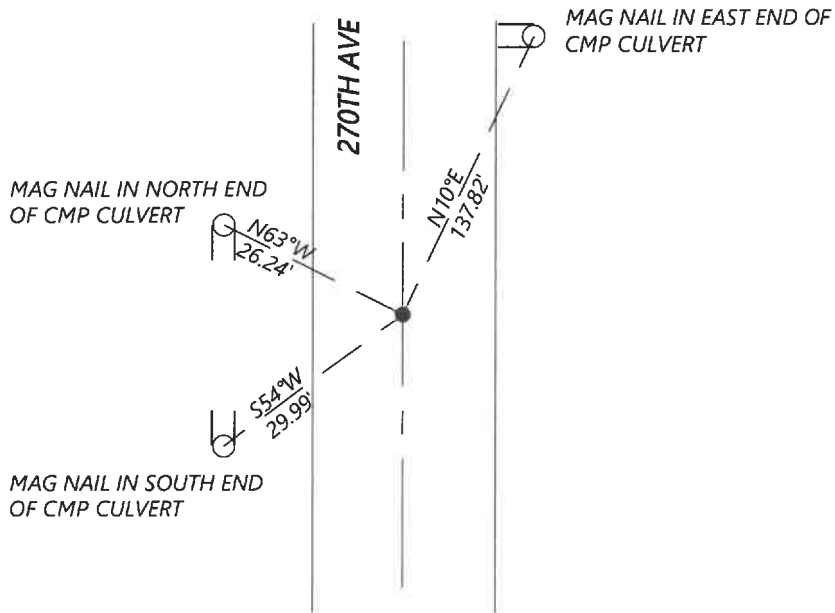
At the corner location shown on the sketch:

On 8/27/2020 found a NO.3 REBAR WITHOUT CAP, BENT

left monument as found  lowered monument  removed monument (explain)

On \_\_\_\_\_ placed a \_\_\_\_\_

### SKETCH OF REFERENCE TIES



N.T.S.

Statement of evidence for this corner location is on back of this page.

I hereby certify that this document was researched and prepared by me or under my direct supervision and that I am a licensed Land Surveyor under the laws of the State of Minnesota.

Signature [Handwritten Signature]

Date 6/16/2021 License No. 45874

Title:

- Land Surveyor
- Professional Engineer
- County Surveyor
- County Engineer

OFFICE OF THE COUNTY RECORDER

County of Murray

I hereby certify that this document was filed in the Co.

Recorder's office at \_\_\_\_\_ M. on the \_\_\_\_\_ day of \_\_\_\_\_ A.D. 20\_\_\_\_\_

County Recorder Karen Brown

by JUN 22 2021, Deputy

DOCUMENT NO. \_\_\_\_\_

**Statement of Evidence:**

East Quarter Corner of Section 28, Township 107 North, Range 39 West, 5th Principal Meridian, Murray County, Minnesota.

- July 1861      General Land Office survey notes set a post in mound.*
- Nov. 1904      Survey record for Section 28 shows the corner was established at midpoint between section corners (2647.5') but does not state what was set.*
- Feb. 2015      A survey in Section 28 by Dennis Esplan shows a found iron monument at corner. He shows a distance of 2647.76' to the NE corner.*
- Sept. 2020      Westwood Professional Services searched and found a  $\frac{3}{8}$ " rebar at intersection of road centerline and East-West fenceline. Position fits well with 2015 survey and was accepted as the corner.*

Analysis of the recovered data, field evidence and survey measurements, indicates that the monument found is the correct perpetuation of this corner. For additional information concerning this corner please contact Westwood Professional Services.